

If you have questions,
call **1-800-RID-LICE** or
log on to **www.ridlice.com**
24 hours a day.



Steps to Success With RID

SEE PRODUCT PACKAGING FOR COMPLETE INSTRUCTIONS

Step 1: Apply product



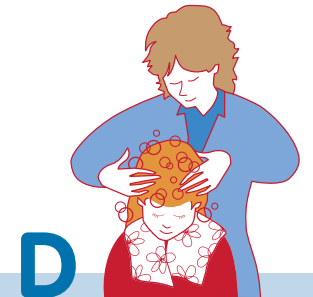
A
Apply RID Shampoo to **DRY** hair.



B
Thoroughly massage product into scalp, behind ears and onto back of neck.



C
Allow product to remain on hair for 10 minutes.



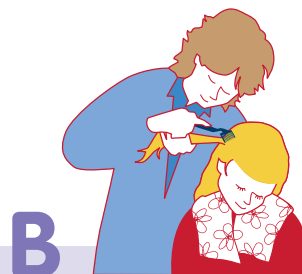
D
RID Shampoo: Lather with warm water and then rinse.

Step 2: Comb



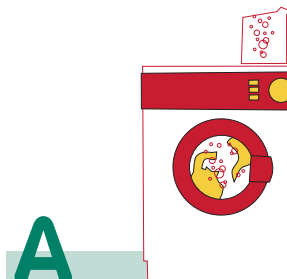
A
Comb with a wide-toothed comb to remove any tangles.

Note: When using RID Shampoo, try RID Lice and Egg Comb-out Kit to make combing easier.

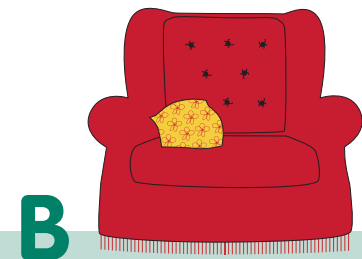


B
Carefully comb the **ENTIRE** head using the RID comb. (This process may be time consuming.)

Step 3: Treat the home



A
All washable items should be washed in **HOT** water (130° F) and dried at **HIGH** temperatures.



B
Nonwashable items (eg, furniture) can also be treated to help prevent reinfestation.

Note: To treat nonwashable items in your home, consider RID Home Lice Control Spray.

FOR RID SHAMPOO, STEPS 1 AND 2 MUST BE REPEATED IN 7-10 DAYS. SEE PACKAGE INSERT.

